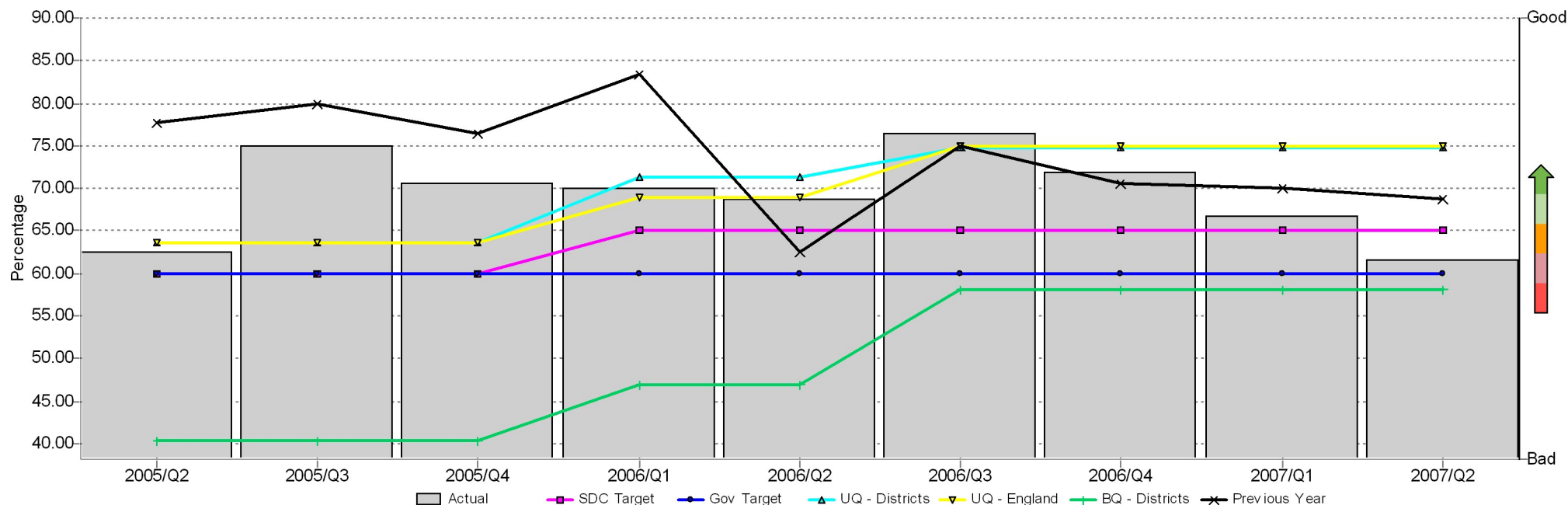


(Strategic Suite) BVPI 109a - Major Planning Applications Data Chart

Actual and comparative data for previous 2 years to the current quarter

BVPI 109 a - Major Planning Applications (Salisbury District Council)

Previous 2 Years to Date (Last Value)



Description

Percentage of Planning Applications determined within government development control targets to determine: 60% of Major applications in 13 weeks. Shows actual and comparative data for BVPI 109a for the previous two years to the current quarter. This is a particularly tough indicator as the number of Major applications tend to be considerably lower than other categories and therefore the impact of just a small number of applications not being determined within 13 weeks is felt far greater on the total result than it would be for the other categories. Also this category includes huge applications such as Old Sarum which are unlikely to be determined within the 13 week target.

Period Table

	Actual	SDC Target	SDC Target - Variance	Gov Target	Gov Target - Variance	UQ - Districts	UQ - Districts - Variance	UQ - England	UQ - England - Variance	BQ - Districts	BQ - Districts - Variance	Previous Year	Previous Year - Variance
2005/Q2	62.50%	60.00%	2.50%	60.00%	2.50%	63.60%	(1.10%)	63.60%	(1.10%)	40.30%	22.20%	77.78%	(15.28%)
2005/Q3	75.00%	60.00%	15.00%	60.00%	15.00%	63.60%	11.40%	63.60%	11.40%	40.30%	34.70%	80.00%	(5.00%)
2005/Q4	70.59%	60.00%	10.59%	60.00%	10.59%	63.60%	6.99%	63.60%	6.99%	40.30%	30.29%	76.39%	(5.80%)
2006/Q1	70.00%	65.00%	5.00%	60.00%	10.00%	71.25%	(1.25%)	69.01%	0.99%	46.87%	23.13%	83.33%	(13.33%)
2006/Q2	68.75%	65.00%	3.75%	60.00%	8.75%	71.25%	(2.50%)	69.01%	(0.26%)	46.87%	21.88%	62.50%	6.25%
2006/Q3	76.47%	65.00%	11.47%	60.00%	16.47%	74.75%	1.72%	74.90%	1.57%	58.05%	18.42%	75.00%	1.47%
2006/Q4	71.83%	65.00%	6.83%	60.00%	11.83%	74.75%	(2.92%)	74.90%	(3.07%)	58.05%	13.78%	70.59%	1.24%
2007/Q1	66.67%	65.00%	1.67%	60.00%	6.67%	74.75%	(8.08%)	74.90%	(8.23%)	58.05%	8.62%	70.00%	(3.33%)
2007/Q2	61.54%	65.00%	(3.46%)	60.00%	1.54%	74.75%	(13.21%)	74.90%	(13.36%)	58.05%	3.49%	68.75%	(7.21%)

(Strategic Suite) BVPI 109a - Major Planning Applications Data Chart

Actual and comparative data for previous 2 years to the current quarter

Sub-measures Table

	Actual	SDC Target	SDC Target - Variance	Gov Target	Gov Target - Variance	UQ - Districts	UQ - Districts - Variance	UQ - England	UQ - England - Variance	BQ - Districts	BQ - Districts - Variance	Previous Year	Previous Year - Variance
BVPI 109 a - # Decision <= Limit	8.00	--	--	--	--	--	--	--	--	--	--	11.00	(3.00)
BVPI 109 a - # Decisions	13.00	--	--	--	--	--	--	--	--	--	--	16.00	(3.00)

Commentary (2007/Q2)

A decline this quarter but is still above national targets. The two applications referred to in Q1 have come through out of date this quarter. This, combined with the backlog of uncompleted S106 agreements on majors means that, as predicted, it has not been possible to meet SDC targets this quarter, though with considerable effort, the national target has been met. It is getting progressively more difficult to reach target on majors as there are fewer less complex major applications being received. Judy Howles, 19 October 2007

Action Plan (2007/Q2)

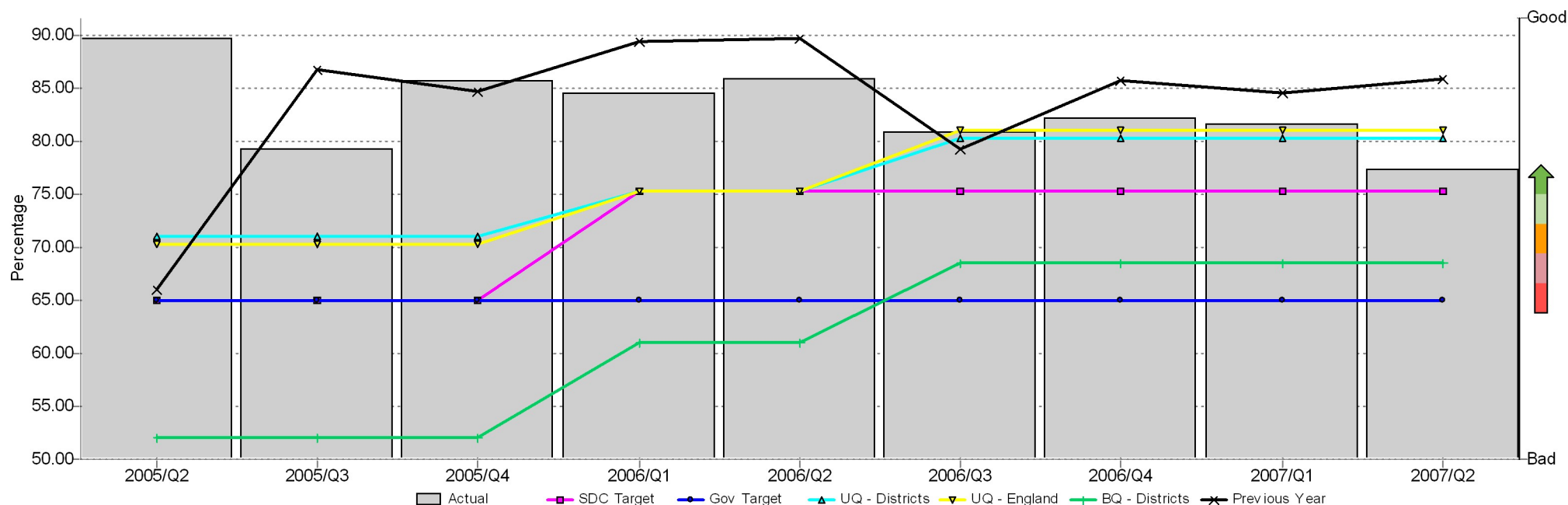
Performance has declined this quarter but is still above national targets. Unfortunately the two applications referred to last quarter have come through out of date this quarter. This, combined with the backlog of uncompleted S106 agreements on major applications means that, as predicted, it has not been possible to meet local targets this quarter, though with considerable effort, the national target has been met. It is getting progressively more difficult to reach target on major applications as there are fewer less complex major applications being received. Continue to closely manage and monitor major applications and continue to work closely with legal services concerning S106 Agreements
Judy Howles, 19 October 2007

(Strategic Suite) BVPI 109b - Minor Planning Applications Data Chart

Actual and comparative data for previous 2 years to the current quarter

BVPI 109 b / EI 005 - Minor Planning Applications (Salisbury District Council)

Previous 2 Years to Date (Last Value)



Description

Percentage of Planning Applications determined within government development control targets to determine: 65% of Minor applications in 8 weeks. Shows actual and comparative data for BVPI 109b for the previous two years to the current quarter.

Period Table

	Actual	SDC Target	SDC Target - Variance	Gov Target	Gov Target - Variance	UQ - Districts	UQ - Districts - Variance	UQ - England	UQ - England - Variance	BQ - Districts	BQ - Districts - Variance	Previous Year	Previous Year - Variance
2005/Q2	89.80%	65.00%	24.80%	65.00%	24.80%	71.00%	18.80%	70.30%	19.50%	52.00%	37.80%	66.07%	23.72%
2005/Q3	79.29%	65.00%	14.29%	65.00%	14.29%	71.00%	8.29%	70.30%	8.99%	52.00%	27.29%	86.76%	(7.48%)
2005/Q4	85.82%	65.00%	20.82%	65.00%	20.82%	71.00%	14.82%	70.30%	15.52%	52.00%	33.82%	84.73%	1.09%
2006/Q1	84.62%	75.40%	9.22%	65.00%	19.62%	75.28%	9.34%	75.40%	9.22%	61.00%	23.62%	89.44%	(4.82%)
2006/Q2	85.92%	75.40%	10.52%	65.00%	20.92%	75.28%	10.64%	75.40%	10.52%	61.00%	24.92%	89.80%	(3.88%)
2006/Q3	80.99%	75.40%	5.59%	65.00%	15.99%	80.39%	0.60%	81.07%	(0.08%)	68.60%	12.39%	79.29%	1.71%
2006/Q4	82.25%	75.40%	6.85%	65.00%	17.25%	80.39%	1.86%	81.07%	1.18%	68.60%	13.65%	85.82%	(3.57%)
2007/Q1	81.69%	75.40%	6.29%	65.00%	16.69%	80.39%	1.30%	81.07%	0.62%	68.60%	13.09%	84.62%	(2.93%)
2007/Q2	77.46%	75.40%	2.06%	65.00%	12.46%	80.39%	(2.93%)	81.07%	(3.61%)	68.60%	8.86%	85.92%	(8.45%)

(Strategic Suite) BVPI 109b - Minor Planning Applications Data Chart

Actual and comparative data for previous 2 years to the current quarter

Sub-measures Table

	Actual	SDC Target	SDC Target - Variance	Gov Target	Gov Target - Variance	UQ - Districts	UQ - Districts - Variance	UQ - England	UQ - England - Variance	BQ - Districts	BQ - Districts - Variance	Previous Year	Previous Year - Variance
BVPI 109 b - # Decision <= Limit	110.00	--	--	--	--	--	--	--	--	--	--	122.00	(12.00)
BVPI 109 b - # Decisions	142.00	--	--	--	--	--	--	--	--	--	--	142.00	0.00

Commentary (2007/Q2)

Performance is still above local and national targets with 77.46% of applications determined within 8 weeks. The team continue to deal with S106 Unilateral obligations for R2 within a short time frame. Judy Howles, 19 October 2007

Action Plan (2007/Q2)

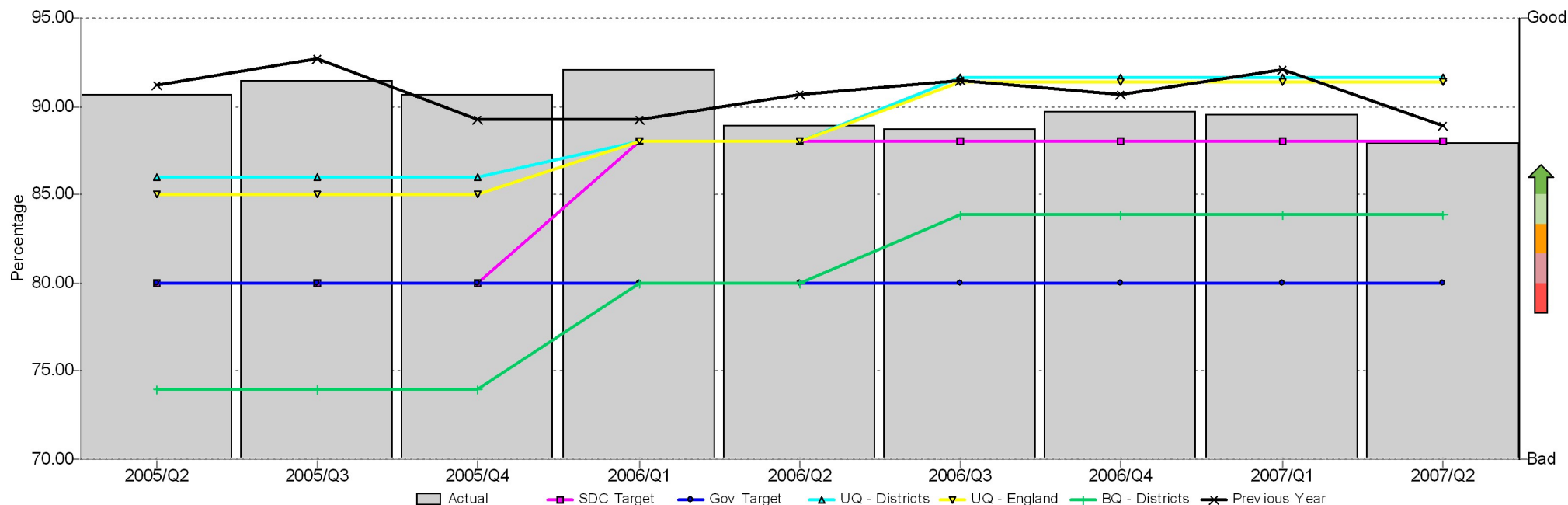
Continue to deal with R2 unilateral agreements within the 8 week window. Ensure applications called to LACs are put on an agenda within the 8 week window. Judy Howles, 19 October 2007

(Strategic Suite) BVPI 109c - Other Planning Applications Data Chart

Actual and comparative data for previous 2 years to the current quarter

BVPI 109 c - Other Planning Applications (Salisbury District Council)

Previous 2 Years to Date (Last Value)



Description

Percentage of Planning Applications determined within government development control targets to determine: 80% of Other applications in 8 weeks. Shows actual and comparative data for BVPI 109c for the previous two years to the current quarter.

Period Table

	Actual	SDC Target	SDC Target - Variance	Gov Target	Gov Target - Variance	UQ - Districts	UQ - Districts - Variance	UQ - England	UQ - England - Variance	BQ - Districts	BQ - Districts - Variance	Previous Year	Previous Year - Variance
2005/Q2	90.68%	80.00%	10.68%	80.00%	10.68%	86.00%	4.68%	85.00%	5.68%	74.00%	16.68%	91.19%	(0.51%)
2005/Q3	91.45%	80.00%	11.45%	80.00%	11.45%	86.00%	5.45%	85.00%	6.45%	74.00%	17.45%	92.71%	(1.25%)
2005/Q4	90.69%	80.00%	10.69%	80.00%	10.69%	86.00%	4.69%	85.00%	5.69%	74.00%	16.69%	89.27%	1.42%
2006/Q1	92.05%	88.00%	4.05%	80.00%	12.05%	88.01%	4.04%	88.00%	4.05%	79.98%	12.07%	89.23%	2.82%
2006/Q2	88.86%	88.00%	0.86%	80.00%	8.86%	88.01%	0.85%	88.00%	0.86%	79.98%	8.88%	90.68%	(1.82%)
2006/Q3	88.72%	88.00%	0.72%	80.00%	8.72%	91.61%	(2.89%)	91.39%	(2.67%)	83.85%	4.87%	91.45%	(2.73%)
2006/Q4	89.72%	88.00%	1.72%	80.00%	9.72%	91.61%	(1.89%)	91.39%	(1.67%)	83.85%	5.87%	90.69%	(0.96%)
2007/Q1	89.54%	88.00%	1.54%	80.00%	9.54%	91.61%	(2.07%)	91.39%	(1.85%)	83.85%	5.69%	92.05%	(2.51%)
2007/Q2	87.90%	88.00%	(0.10%)	80.00%	7.90%	91.61%	(3.71%)	91.39%	(3.49%)	83.85%	4.05%	88.86%	(0.96%)

(Strategic Suite) BVPI 109c - Other Planning Applications Data Chart

Actual and comparative data for previous 2 years to the current quarter

Sub-measures Table

	Actual	SDC Target	SDC Target - Variance	Gov Target	Gov Target - Variance	UQ - Districts	UQ - Districts - Variance	UQ - England	UQ - England - Variance	BQ - Districts	BQ - Districts - Variance	Previous Year	Previous Year - Variance
BVPI 109 c - # Decision <= Limit	356.00	--	--	--	--	--	--	--	--	--	--	351.00	5.00
BVPI 109 c - # Decisions	405.00	--	--	--	--	--	--	--	--	--	--	395.00	10.00

Commentary (2007/Q2)

Performance has declined this quarter to below local target though it is still above national target. This is despite the number of applications determined exceeding the number received during the quarter. There is therefore no backlog, but a reduction in staff resource and a perception of an increase in public expectations in relation to preapplication submissions and discussions are impacting upon the speed of decision making. Judy Howles, 19 October 2007

Action Plan (2007/Q2)

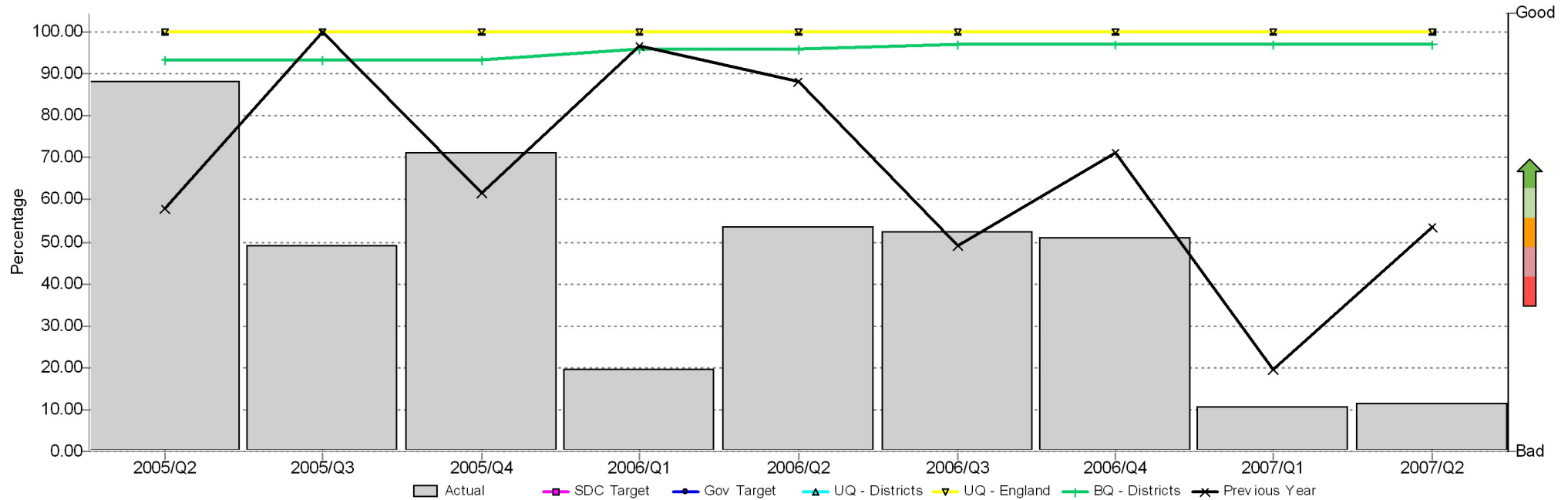
Continue to manage and monitor workload to ensure that any problems are addressed early so that householder applications (which form the majority in the 'other' category) can be determined well within target time, Ideally at 6 weeks from date of receipt. Judy Howles, 19 October 2007

PI 179 - Land Searches (Formerly BVPI 179)

Actual and comparative data for previous 2 years to the current quarter

PI 179 - Land Searches (Salisbury District Council)

Previous 2 Years to Date (Last Value)



Description

Percentage of land searches carried out within ten working days (Former BVPI). Shows actual and comparative data for PI 179 for the previous two years to the current quarter.

Notes

Audit Commission announced that this BVPI was dropped from the suite for 2006/07. Decision was taken by the SUH and Performance Improvement Manager to continue it locally.

During Quarter 2 2006/07, the Land Charges function was transferred to Development Services from Legal & Property Services.

Period Table

	Actual	SDC Target	SDC Target - Variance	Gov Target	Gov Target - Variance	UQ - Districts	UQ - Districts - Variance	UQ - England	UQ - England - Variance	BQ - Districts	BQ - Districts - Variance	Previous Year	Previous Year - Variance
2005/Q2	88.13%	100.00%	(11.87%)	100.00%	(11.87%)	100.00%	(11.87%)	100.00%	(11.87%)	93.30%	(5.17%)	58.02%	30.11%
2005/Q3	49.18%	100.00%	(50.82%)	100.00%	(50.82%)	100.00%	(50.82%)	100.00%	(50.82%)	93.30%	(44.12%)	100.00%	(50.82%)
2005/Q4	71.27%	100.00%	(28.73%)	100.00%	(28.73%)	100.00%	(28.73%)	100.00%	(28.73%)	93.30%	(22.03%)	61.60%	9.67%
2006/Q1	19.44%	100.00%	(80.56%)	100.00%	(80.56%)	100.00%	(80.56%)	100.00%	(80.56%)	96.08%	(76.64%)	96.84%	(77.40%)
2006/Q2	53.50%	100.00%	(46.50%)	100.00%	(46.50%)	100.00%	(46.50%)	100.00%	(46.50%)	96.08%	(42.58%)	88.13%	(34.63%)
2006/Q3	52.46%	100.00%	(47.54%)	100.00%	(47.54%)	100.00%	(47.54%)	100.00%	(47.54%)	97.18%	(44.72%)	49.18%	3.28%
2006/Q4	50.83%	100.00%	(49.17%)	100.00%	(49.17%)	100.00%	(49.17%)	100.00%	(49.17%)	97.18%	(46.35%)	71.27%	(20.44%)
2007/Q1	10.68%	100.00%	(89.32%)	100.00%	(89.32%)	100.00%	(89.32%)	100.00%	(89.32%)	97.18%	(86.50%)	19.44%	(8.76%)

PI 179 - Land Searches (Formerly BVPI 179)

Actual and comparative data for previous 2 years to the current quarter

	Actual	SDC Target	SDC Target - Variance	Gov Target	Gov Target - Variance	UQ - Districts	UQ - Districts - Variance	UQ - England	UQ - England - Variance	BQ - Districts	BQ - Districts - Variance	Previous Year	Previous Year - Variance
2007/Q2	11.55%	100.00%	(88.45%)	100.00%	(88.45%)	100.00%	(88.45%)	100.00%	(88.45%)	97.18%	(85.63%)	53.50%	(41.95%)

Commentary (2007/Q2)

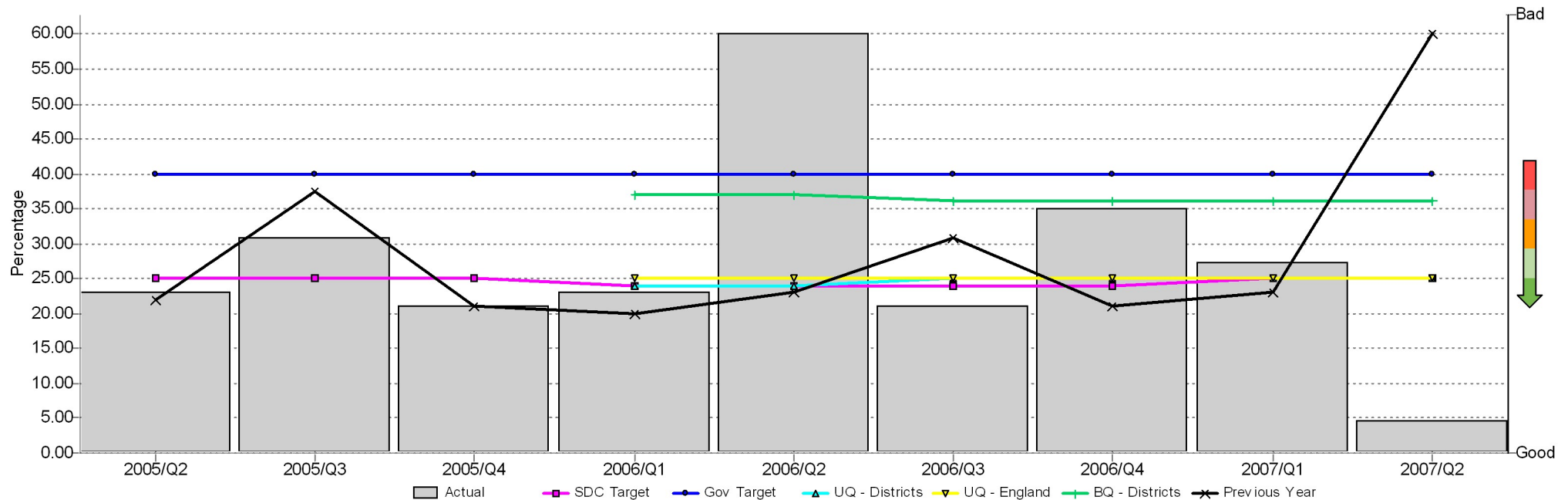
Total for the quarter is 11.55%. This quarter it has been especially difficult to turn around searches within the target time owing to the following pressures: the upgrade of a new computer programme for FastCharges, problems with the installation, not enough temporary cover, new legislation, and meetings held to discuss the above there has been a down turn in the processing of searches. Sheila VanHagen, 8 November 2007

BVPI 204 - Planning Appeals Allowed

Actual and comparative data for previous 2 years to the current quarter

BVPI 204 - Planning Appeals Allowed (Salisbury District Council)

Previous 2 Years to Date (Last Value)



Description

Percentage of appeals allowed against the authority's decision to refuse planning applications. Shows actual and comparative data for BVPI 204 for the previous two years to the current quarter.

Period Table

	Actual	SDC Target	SDC Target - Variance	Gov Target	Gov Target - Variance	UQ - Districts	UQ - Districts - Variance	UQ - England	UQ - England - Variance	BQ - Districts	BQ - Districts - Variance	Previous Year	Previous Year - Variance
2005/Q2	23.00%	25.00%	2.00%	40.00%	17.00%	--	--	--	--	--	--	22.00%	(1.00%)
2005/Q3	30.77%	25.00%	(5.77%)	40.00%	9.23%	--	--	--	--	--	--	37.50%	6.73%
2005/Q4	21.00%	25.00%	4.00%	40.00%	19.00%	--	--	--	--	--	--	21.00%	0.00%
2006/Q1	23.00%	24.00%	1.00%	40.00%	17.00%	24.00%	1.00%	25.00%	2.00%	37.00%	14.00%	20.00%	(3.00%)
2006/Q2	60.00%	24.00%	(36.00%)	40.00%	(20.00%)	24.00%	(36.00%)	25.00%	(35.00%)	37.00%	(23.00%)	23.00%	(37.00%)
2006/Q3	21.00%	24.00%	3.00%	40.00%	19.00%	25.00%	4.00%	25.00%	4.00%	36.10%	15.10%	30.77%	9.77%
2006/Q4	35.00%	24.00%	(11.00%)	40.00%	5.00%	25.00%	(10.00%)	25.00%	(10.00%)	36.10%	1.10%	21.00%	(14.00%)
2007/Q1	27.27%	25.00%	(2.27%)	40.00%	12.73%	25.00%	(2.27%)	25.00%	(2.27%)	36.10%	8.83%	23.00%	(4.27%)
2007/Q2	4.76%	25.00%	20.24%	40.00%	35.24%	25.00%	20.24%	25.00%	20.24%	36.10%	31.34%	60.00%	55.24%

BVPI 204 - Planning Appeals Allowed

Actual and comparative data for previous 2 years to the current quarter

Commentary (2007/Q2)

A very good quarter's performance with only 1 appeal against refusal of planning permission allowed = 4.76% allowed. Judy Howles, 19 October

Action Plan (2007/Q2)

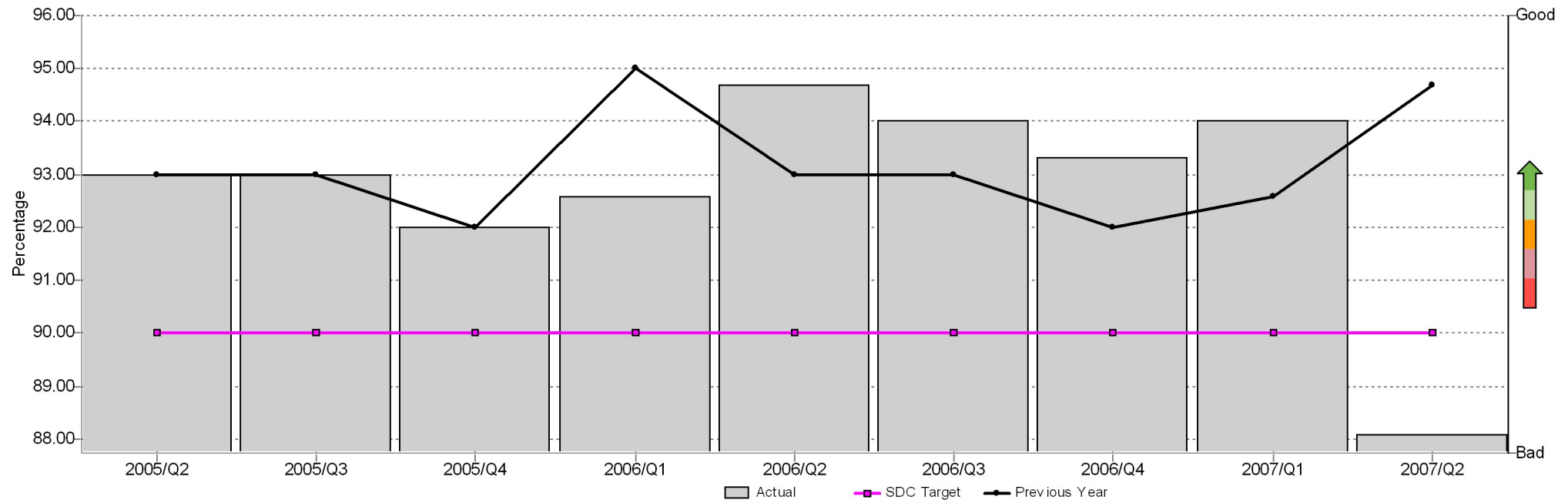
Continue to scrutinise reasons for refusal closely and continue to check appeal statements before they are sent out. Judy Howles, 19 October

(Local Indicator) PI 452 - Delegation Percentage

Actual and comparative data for previous 2 years to the current quarter

PI 452 - Delegation Percentage (Salisbury District Council)

Previous 2 Years to Date (Last Value)



Description

The percentage of decisions made under delegated powers. Shows actual and comparative data for PI 452 for the previous two years to the current quarter.

Period Table

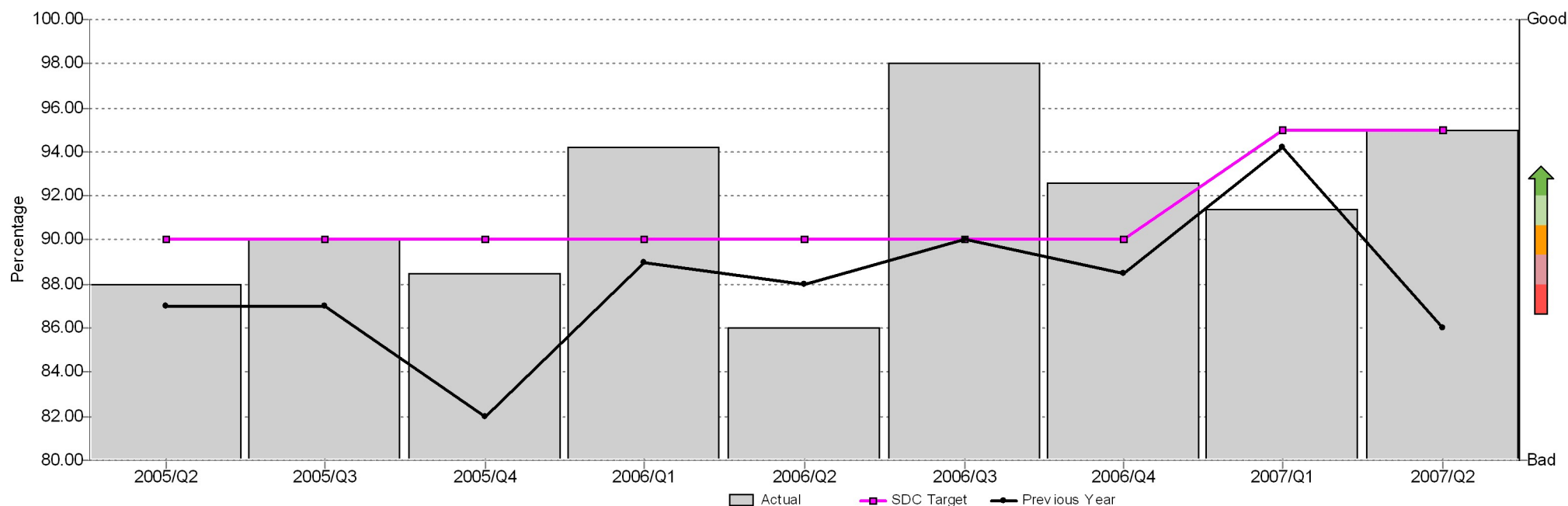
	Actual	SDC Target	SDC Target - Variance	SDC Target - Index Range	Previous Year	Previous Year - Variance	Previous Year - Index Range
2005/Q2	93.00%	90.00%	3.00%	On Target	93.00%	0.00%	On Target
2005/Q3	93.00%	90.00%	3.00%	On Target	93.00%	0.00%	On Target
2005/Q4	92.00%	90.00%	2.00%	On Target	92.00%	0.00%	On Target
2006/Q1	92.59%	90.00%	2.59%	On Target	95.00%	(2.41%)	Near Target
2006/Q2	94.70%	90.00%	4.70%	On Target	93.00%	1.70%	On Target
2006/Q3	94.00%	90.00%	4.00%	On Target	93.00%	1.00%	On Target
2006/Q4	93.32%	90.00%	3.32%	On Target	92.00%	1.32%	On Target
2007/Q1	94.00%	90.00%	4.00%	On Target	92.59%	1.41%	On Target
2007/Q2	88.08%	90.00%	(1.92%)	Near Target	94.70%	(6.62%)	Below Target

(Local Indicator) PI 454 - % Decisions sent within 3 days of delegated decision

Actual and comparative data for previous 2 years to the current quarter

PI 454 - % Decisions sent within 3 days of delegated decision (Salisbury District Council)

Previous 2 Years to Date (Last Value)



Description

The percentage of Decisions sent out within three days of delegated decision. Shows actual and comparative data for PI 454 for the previous two years to the current quarter.

Period Table

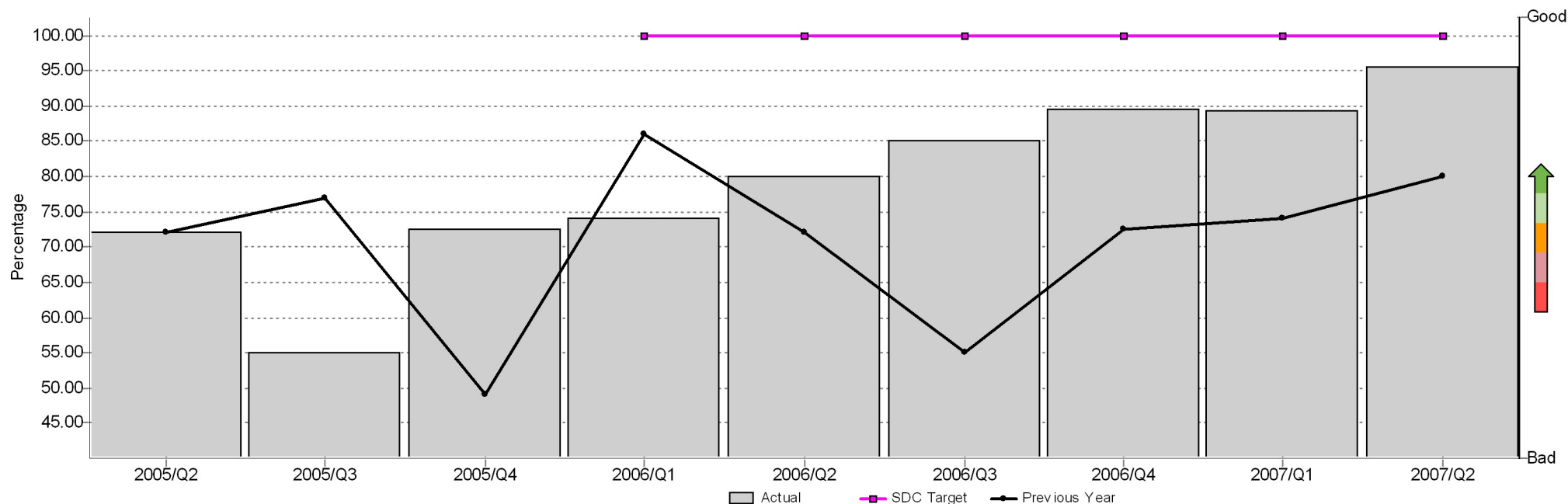
	Actual	SDC Target	SDC Target - Variance	SDC Target - Index Range	Previous Year	Previous Year - Variance	Previous Year - Index Range
2005/Q2	88.00%	90.00%	(2.00%)	Near Target	87.00%	1.00%	On Target
2005/Q3	90.00%	90.00%	0.00%	On Target	87.00%	3.00%	On Target
2005/Q4	88.50%	90.00%	(1.50%)	Near Target	82.00%	6.50%	On Target
2006/Q1	94.20%	90.00%	4.20%	On Target	89.00%	5.20%	On Target
2006/Q2	86.00%	90.00%	(4.00%)	Near Target	88.00%	(2.00%)	Near Target
2006/Q3	98.00%	90.00%	8.00%	On Target	90.00%	8.00%	On Target
2006/Q4	92.60%	90.00%	2.60%	On Target	88.50%	4.10%	On Target
2007/Q1	91.39%	95.00%	(3.61%)	Near Target	94.20%	(2.81%)	Near Target
2007/Q2	94.95%	95.00%	(0.05%)	Near Target	86.00%	8.95%	Areas to Note

(Local Indicator) PI 457 - % Enforcement Site Visits within 3 days

Actual and comparative data for previous 2 years to the current quarter

PI 457 - % Enforcement Site Visits within 3 days (Salisbury District Council)

Previous 2 Years to Date (Last Value)



Description

The percentage of Enforcement Site Visits undertaken within three days. Shows actual and comparative data for PI 457 for the previous two years to the current quarter.

Period Table

	Actual	SDC Target	SDC Target - Variance	SDC Target - Index Range	Previous Year	Previous Year - Variance	Previous Year - Index Range
2005/Q2	72.00%	--	--	Unknown	72.00%	0.00%	On Target
2005/Q3	55.00%	--	--	Unknown	77.00%	(22.00%)	Area of Concern
2005/Q4	72.50%	--	--	Unknown	49.00%	23.50%	Areas to Note
2006/Q1	74.00%	100.00%	(26.00%)	Area of Concern	86.00%	(12.00%)	Area of Concern
2006/Q2	80.00%	100.00%	(20.00%)	Area of Concern	72.00%	8.00%	Areas to Note
2006/Q3	85.00%	100.00%	(15.00%)	Area of Concern	55.00%	30.00%	Areas to Note
2006/Q4	89.40%	100.00%	(10.60%)	Area of Concern	72.50%	16.90%	Areas to Note
2007/Q1	89.20%	100.00%	(10.80%)	Area of Concern	74.00%	15.20%	Areas to Note
2007/Q2	95.51%	100.00%	(4.49%)	Near Target	80.00%	15.51%	Areas to Note

Commentary (2007/Q2)

Due to an increasing focus, performance has generally improved during the quarter. Performance has improved by at least 5% across two of the three key Enforcement indicators. In particular, I am pleased to report a significant improvement in Officers attending the site within 3 days of receipt of the enquiry (up by 6.3%). This is notwithstanding a continuing high number of enquiries, together with the loss of a key member of staff mid-way through August, coupled with holiday absence, which has resulted in a slight fall in timely responses to

(Local Indicator) PI 457 - % Enforcement Site Visits within 3 days

Actual and comparative data for previous 2 years to the current quarter

complainants. Stephen Hawkins, October 2007

Action Plan (2007/Q2)

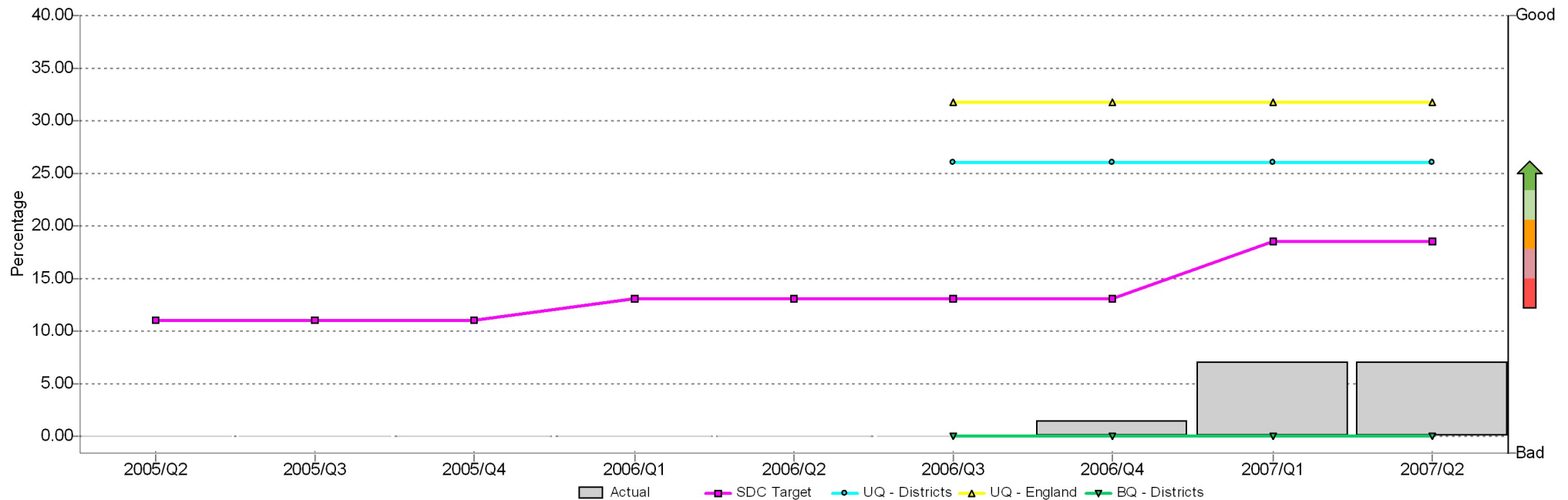
A new member of staff has now been recruited, however considerable training will be required before the team's skills and experience enable maximum efficiencies to be achieved. It is nevertheless anticipated that performance in the key Enforcement indicators will be sustained and hopefully improved further upon during the coming quarters. Stephen Hawkins, October 2007

BVPI 219 b - Conservation Areas: Character Appraisal

Actual and comparative data for previous 2 years to the current quarter

BVPI 219 b - Conservation Areas: Character Appraisal (Salisbury District Council)

Previous 2 Years to Date (Last Value)



Description

Percentage of conservation areas within the local authority area that have an up-to-date character appraisal. Shows actual and comparative data for BVPI 219b for the previous two years to the current quarter.

Period Table

	Actual	SDC Target	SDC Target - Variance	UQ - Districts	UQ - Districts - Variance	UQ - England	UQ - England - Variance	BQ - Districts	BQ - Districts - Variance
2005/Q2	0.00%	11.00%	(11.00%)	--	--	--	--	--	--
2005/Q3	0.00%	11.00%	(11.00%)	--	--	--	--	--	--
2005/Q4	0.00%	11.00%	(11.00%)	--	--	--	--	--	--
2006/Q1	0.00%	13.04%	(13.04%)	--	--	--	--	--	--
2006/Q2	0.00%	13.04%	(13.04%)	--	--	--	--	--	--
2006/Q3	0.00%	13.04%	(13.04%)	26.00%	(26.00%)	31.81%	(31.81%)	0.00%	0.00%
2006/Q4	1.43%	13.04%	(11.61%)	26.00%	(24.57%)	31.81%	(30.38%)	0.00%	1.43%
2007/Q1	7.14%	18.57%	(11.43%)	26.00%	(18.86%)	31.81%	(24.67%)	0.00%	7.14%
2007/Q2	7.14%	18.57%	(11.43%)	26.00%	(18.86%)	31.81%	(24.67%)	0.00%	7.14%

BVPI 219 b - Conservation Areas: Character Appraisal

Actual and comparative data for previous 2 years to the current quarter

Commentary (2007/Q2)

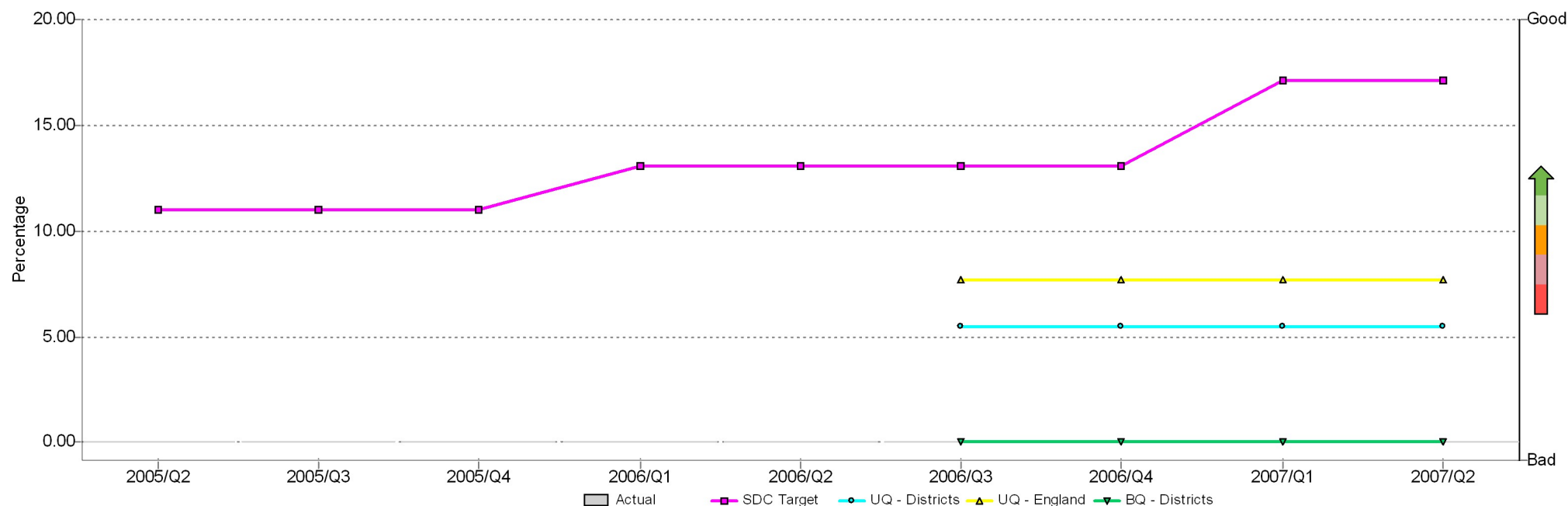
There is no change in the indicators for conservation from last quarter. Eric Teagle, 17 October 2007

BVPI 219 c - Conservation Areas: Management Proposals

Actual and comparative data for previous 2 years to the current quarter

BVPI 219 c - Conservation Areas: Management Proposals (Salisbury District Council)

Previous 2 Years to Date (Last Value)



Description

Percentage of conservation areas with published management proposals. Shows actual and comparative data for BVPI 219c for the previous two years to the current quarter.

Period Table

	Actual	SDC Target	SDC Target - Variance	UQ - Districts	UQ - Districts - Variance	UQ - England	UQ - England - Variance	BQ - Districts	BQ - Districts - Variance
2005/Q2	0.00%	11.00%	(11.00%)	--	--	--	--	--	--
2005/Q3	0.00%	11.00%	(11.00%)	--	--	--	--	--	--
2005/Q4	0.00%	11.00%	(11.00%)	--	--	--	--	--	--
2006/Q1	0.00%	13.04%	(13.04%)	--	--	--	--	--	--
2006/Q2	0.00%	13.04%	(13.04%)	--	--	--	--	--	--
2006/Q3	0.00%	13.04%	(13.04%)	5.50%	(5.50%)	7.70%	(7.70%)	0.00%	0.00%
2006/Q4	0.00%	13.04%	(13.04%)	5.50%	(5.50%)	7.70%	(7.70%)	0.00%	0.00%
2007/Q1	0.00%	17.14%	(17.14%)	5.50%	(5.50%)	7.70%	(7.70%)	0.00%	0.00%
2007/Q2	0.00%	17.14%	(17.14%)	5.50%	(5.50%)	7.70%	(7.70%)	0.00%	0.00%

Commentary (2007/Q2)

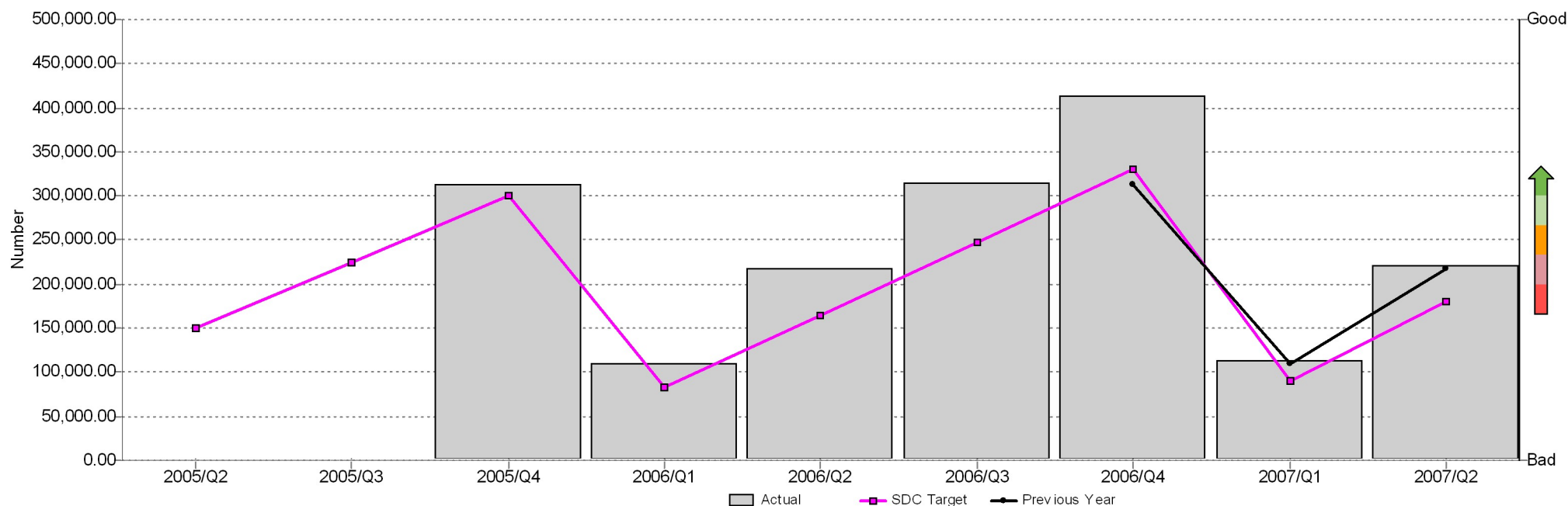
There is no change in the indicators for conservation from last quarter. Eric Teagle, 17 October 2007

(Local Indicator) PI 569 - Tourism Website

Actual and comparative data for previous 2 years to the current quarter

PI 569 - Tourism Website (Salisbury District Council)

Previous 2 Years to Date (Last Value)



Description

Number of visits to tourism website p.a. (cumulative). Shows actual and comparative data for PI 569 for the previous two years to the current quarter.

Period Table

	Actual	SDC Target	SDC Target - Variance	SDC Target - Index Range	Previous Year	Previous Year - Variance	Previous Year - Index Range
2005/Q2	--	150,000.00	--	Unknown	--	--	Unknown
2005/Q3	--	225,000.00	--	Unknown	--	--	Unknown
2005/Q4	312,176.00	300,000.00	12,176.00	On Target	--	--	Unknown
2006/Q1	109,024.00	82,500.00	26,524.00	Areas to Note	--	--	Unknown
2006/Q2	217,907.00	165,000.00	52,907.00	Areas to Note	--	--	Unknown
2006/Q3	314,567.00	247,500.00	67,067.00	Areas to Note	--	--	Unknown
2006/Q4	413,563.00	330,000.00	83,563.00	Areas to Note	312,176.00	101,387.00	Areas to Note
2007/Q1	112,784.00	90,000.00	22,784.00	Areas to Note	109,024.00	3,760.00	On Target
2007/Q2	220,540.00	180,000.00	40,540.00	Areas to Note	217,907.00	2,633.00	On Target

Commentary (2007/Q2)

Work is progressing on the new website which should go live in November 2007. Bryn Jones, 22 October 2007